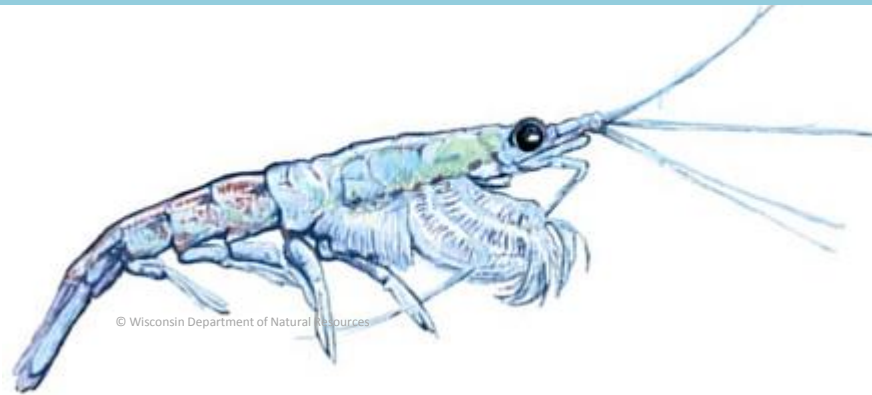


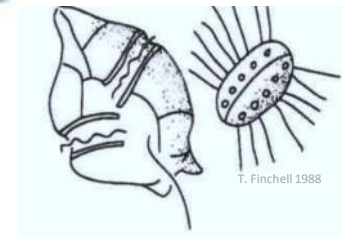
# Trophodynamics of krill and its potential role in blue whale feeding in the Perth Canyon, south-east Indian Ocean



©Hannah@C.P.S



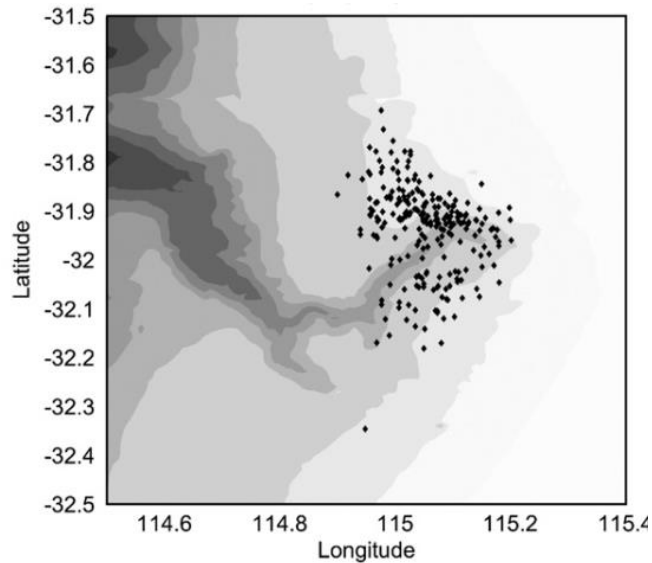
© Wisconsin Department of Natural Resources



T. Finchell 1988

**Alicia Sutton, Patti Virtue, Peter Nichols, Lynnath Beckley, Curt Jenner, Micheline Jenner**

# Perth Canyon



Boat survey sightings of pygmy blue whales; Rennie et al. (2009)

- Blue whales migrate along the WA coast and feed on krill within the Perth Canyon <sup>1,2,3</sup>
- More than 30 species of krill occur in the region <sup>4,5</sup>
- *Euphausia recurva* is one of the most abundant species <sup>1,4,5</sup>
- The importance of krill in marine food webs has led to a number of trophodynamic studies investigating their fatty acid and stable isotope compositions <sup>6,7,8,9</sup>

## Aim

To relate biochemical data obtained for *E. recurva*, as well as *Stylocheiron carinatum* and *Pseudeuphausia latifrons*, with their potential food source, phytoplankton, and one of their potential predators, the endangered pygmy blue whale (*Balaenoptera musculus brevicauda*), sampled in the Perth Canyon.

# Sample collection

- Zooplankton samples collected with a surface net on board R.V. Whale Song, April 2014
- *E. recurva*, *P. latifrons* and *S. carinatum* identified and frozen
- Phytoplankton samples were obtained by filtering seawater
- Biopsy sample obtained from a pygmy blue whale



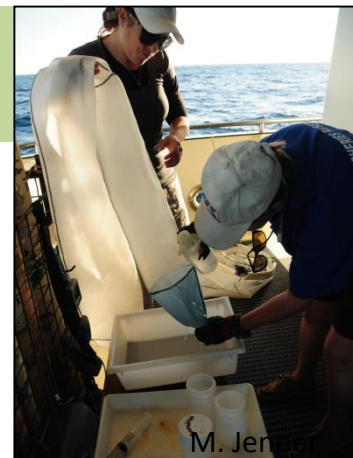
## Stable isotopes

- Krill analysed for  $\delta^{15}\text{N}$  and  $\delta^{13}\text{C}$
- Analysed at the West Australian Biogeochemistry Centre (WABC)



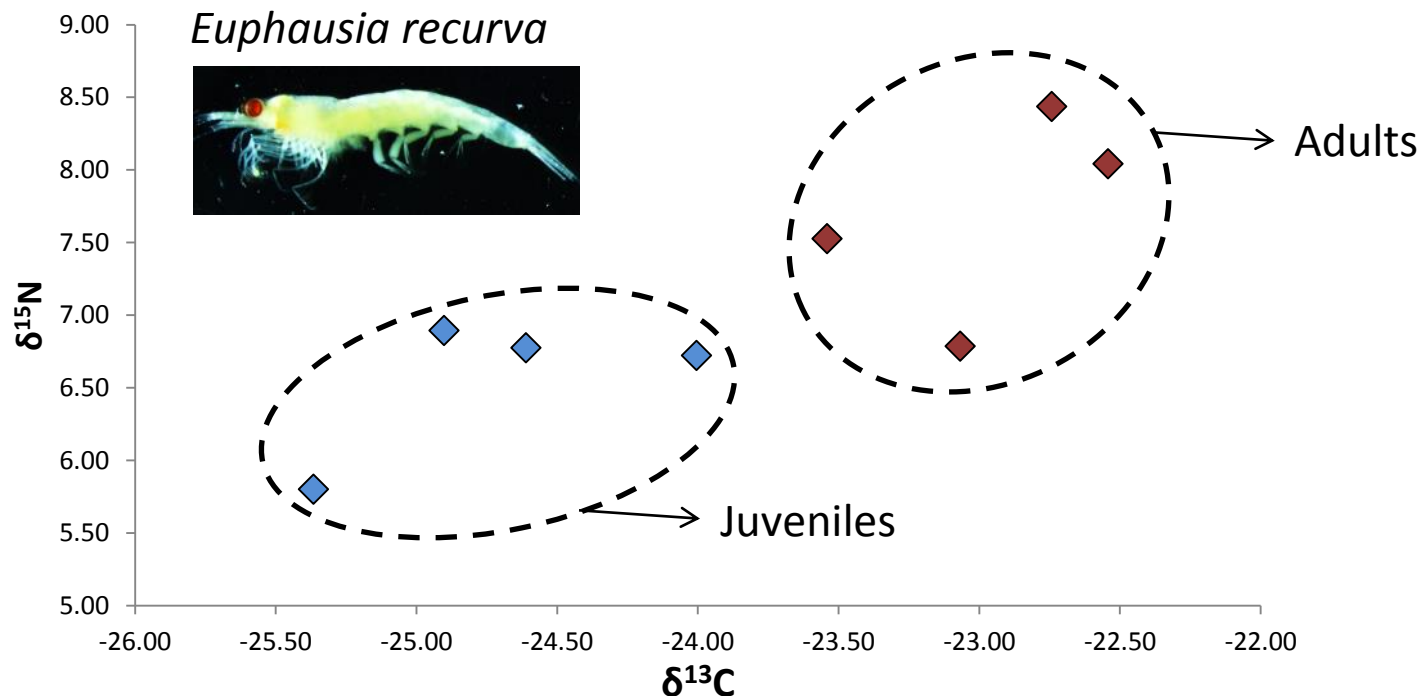
## Lipids and fatty acids

- Modified Bligh and Dyer (1959) method
- Obtained lipid classes and fatty acid composition for krill, phytoplankton and blue whale outer blubber layer



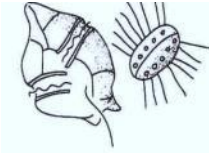
# Krill fatty acids and stable isotopes

- All krill had high polyunsaturated fatty acids (PUFA) (~50%), particularly omega-3 PUFA
- The high DHA : EPA ratio reflected a dinoflagellate diet rather than a diatom diet
- High oleic acid (18:1 $\omega$ 9) : vaccenic acid (18:1 $\omega$ 7) ratio is indicative of an omnivorous diet
- Stable isotopes positions *E. recurva* as a first, possibly second order consumer (5.8 - 8.4  $\delta^{15}\text{N}$ ) and phytoplankton as the likely source of carbon (-18 to -24  $\delta^{13}\text{C}$ )



# Phytoplankton and blue whale fatty acids

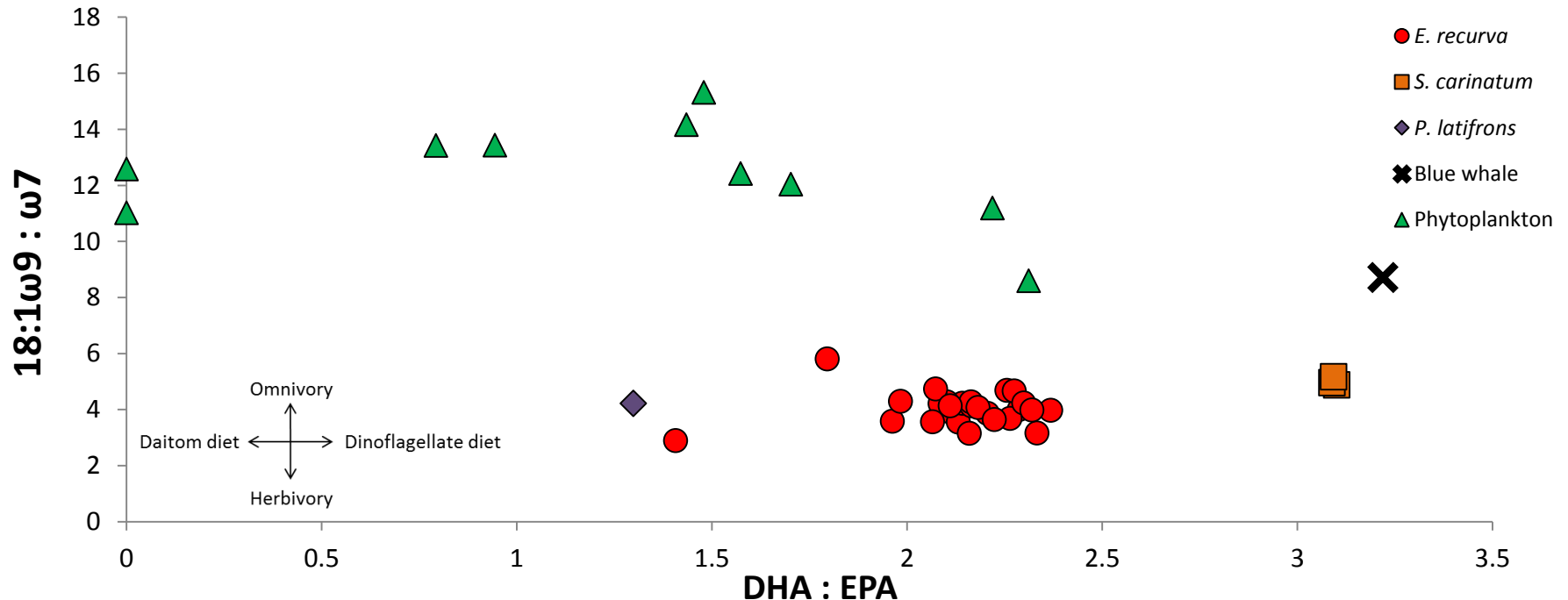
- Krill fatty acid profiles did not match that of the surface phytoplankton sampled
- Phytoplankton low in PUFA and more reflective of degraded and detrital material



- Pygmy blue whale outer blubber layer was high in monounsaturated fatty acids (MUFA) (58%) rather than PUFA



- Did not accurately reflect the krill fatty acid composition
- High DHA : EPA ratio in blubber indicates a diet originating from dinoflagellates, as for krill



# Discussion

- High PUFA, particularly omega-3 PUFA, is typical for krill species
- *E. recurva* has fed on diatoms, dinoflagellates, formaniferans and crustaceans in the western North Pacific<sup>10</sup>
- Krill may be feeding at the deep chlorophyll maximum, rather than surface waters
- Phytoplankton are often restricted to the deep chlorophyll maximum (50 - 120 m) off WA in autumn<sup>11,12,13</sup>
- Smaller phytoplankton dominate off WA which is typical of a microbial food web and oligotrophic conditions<sup>1</sup>
- Stratification in FA composition is evident across the depth of marine mammal blubber, the inner layer is thought to be a better indicator of prey than outer blubber layer<sup>14,15,16</sup>

## Acknowledgements

- ANZ Holsworth Wildlife Grant, WABC, Max Wellington, Lara Marcus, Peter Mansour, Eric Raes

<sup>10</sup> Suh & Choi 1998; <sup>11</sup> Hanson 2004; <sup>12</sup> Hanson *et al.* 2005; <sup>13</sup> Koslow *et al.* 2008; <sup>14</sup> Hooker *et al.* 2001; <sup>15</sup> Koopman *et al.* 1996; <sup>16</sup> Olsen & Grahl-Nielsen 2003