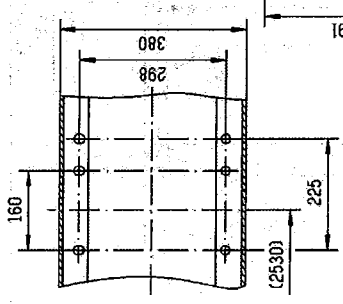


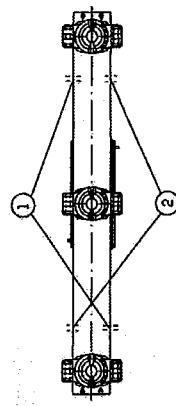
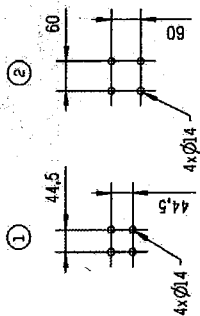
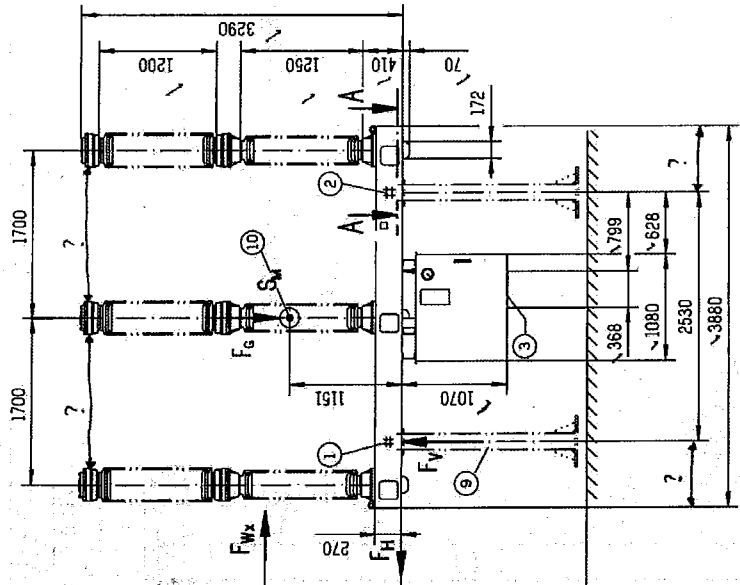
Beifüge bitte Verbilligung des Lieferers, Ver-
 wertung und Nutzung des Patents nach gesetzl. Anord-
 nung nach dem jeweiligen Rechtsstand. Änderungen ver-
 pflichten zu Schenkung. Alle Rechte vorbehalten, insbesondere
 im Falle der Patentierung oder Schutzrechts-Erteilung.

The reproduction, transmission or use of this document or its
 contents is not permitted without express written authority.
 Drawings and text are for reference only. All rights, including rights
 reserved by patent grant or registration of a utility model or design.

① A-A

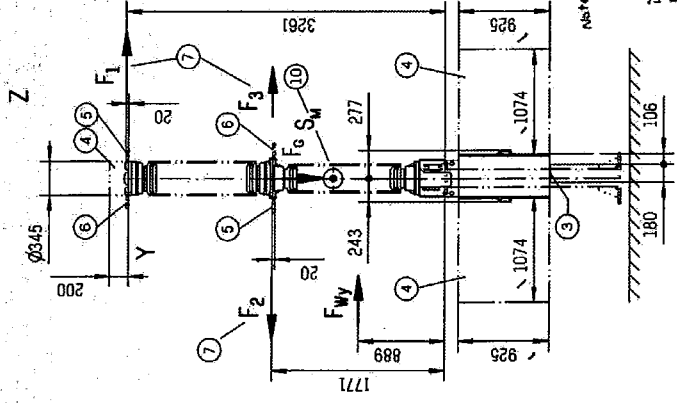


For Details
 Refer to structure
 drawings.
 H=2225mm



F _G	F _{wx}	F _{wy}	F _{stat.}	F _{stat,dyn}
weight loads	wind loads, at a wind		tensile load at terminal	
15.0 kN	5.4 kN	8.1 kN	2.0 kN	4.0 kN
Total	speed of 57 m/s			

operating loads per pillar
 vertical F_y :
 + 15 000 N (up)
 - 20 000 N (down)
 horizontal F_H :
 ± 4 000 N



Note:-

Aerial conductor
 that will be used
 is AAC 37/3.75 written 4
 Please indicate the
 conductor details between the pole and the aerial conductor

- ① Two earth-terminals M12, arranged diagonally to the opposite, holes acc. to NEMA
- ② Two earth-terminals M12, arranged diagonally to the opposite, holes acc. to DIN 48 011
- ③ ?
- ④ ?
- ⑤ Aluminium terminal-plates with holes according to clients demands
- ⑥ ?
- ⑦ Permissible tensile load at terminal

Using the following formulae, the data given must be observed:
 $F_1 \leq F$; $F_2 \leq F_1 \cdot 2.1$; $F_3 + F_y \cdot 0.475 \leq F$
 ⑧ Dimension for mounting on pillar acc. 160x298.
 ⑨ Supporting structures not part of Siemens delivery.
 ⑩ Centre of gravity

SWA VARQUELOO
 24/12/2012

Index		Remark	
First issue:	23.02.2012	Current update	special dimensional drawing
Drawn by:	AK	Checked by:	AK
Approved by:		Released by:	
Product no.:	3HM 427 04990 200	Product no.:	3HM 427 04990 200
Version:		Version:	
Sheet no.:	B01 -	Sheet no.:	B01 -
Index:		Index:	

Minor deviations from the dimensions and data stated are permissible

Siemens AG
 Energy Sector
 Power Transmission Division

HP CB B OM CE / 26320 l. type 3AP1FG type

Triple-Pole Circuit Breaker 145 kV

Format/type: 3HM 427 04990 200

Product no.: 3HM 427 04990 200

Version: 3HM 427 04990 200

Sheet no.: B01 -

Index: B01 -